

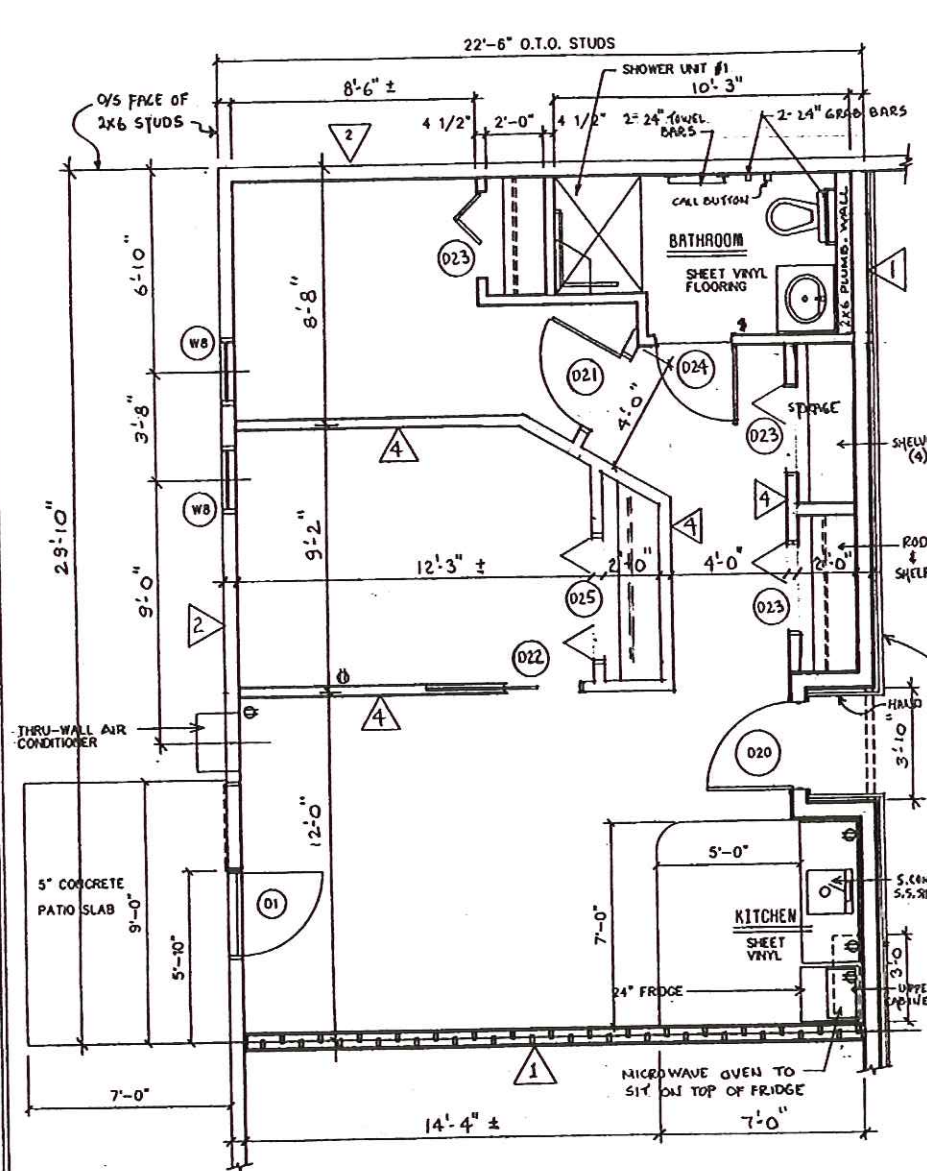


Woodland Courts

"Independent & Assisted Living Suites"

387 Annie Street Selkirk Manitoba R1A 3Y8 (204) 785-1066 Fax. (204) 482-4369 E-mail jloyd@geriatricare.ca

PLAN "B" Two bedroom suite approx. 661 sq. ft.



FLOOR PLAN

SCALE: 1/4" = 1'-0"

2 BEDROOM UNITS (2)
AREA: 661 SQUARE FEET